

**SUSHI:  
Standardized Usage Statistics  
Harvesting Initiative**

**Tim Jewell  
Oliver Pesch  
NISO SUSHI Working Group**

ALA Midwinter  
January 2006  
San Antonio

# DLF Electronic Resource Management Initiative

- ERMI (original project)
  - Detailed ERM functional requirements, data dictionary, etc.
  - Some (but small) attention to usage data
  - Looked toward COUNTER development
- ERMI 2 will focus on
  - License expression standards and training
  - Data Dictionary revision
  - Usage data intake and reporting requirements

# COUNTER Code of Practice for Journals and Databases (Release 2, April 2005)

- Required Journal Reports
  - 1: Successful Full-Text Article Requests by Month and Journal
  - 2: Turnaways by Month and Journal
- Optional Journal Reports
  - 3: Successful Item Requests and Turnaways
  - 4: Total Searches Run by Month and Service

<http://www.projectcounter.org>



# COUNTER Code of Practice for Journals and Databases

- Database Reports
  - 1: Total Searches and Sessions by Month and Database
  - 2: Turnaways by Month and Database
  - 3: Total Searches and Sessions by Month and Service

# COUNTER Code of Practice for Books and Reference Works (Draft Release 1, January 2005)

- Report 1 : Successful Title Requests by Month and Title
- Report 2: Successful Section Requests by Month and Title
- Report 3: Turnaways by Month and Title
- Report 4: Total Searches and Sessions by Month and Title
- Report 5: Total Searches and Sessions by Month and Service

# Usage Data Problems

- Expanding scope of E-resources
- Data proliferation
- COUNTER extremely helpful, but
- Lack of standardized “containers”
- Time consuming to gather, assemble, report
- Hence, SUSHI (Standardized Usage Statistics Harvesting Initiative)

# NISO SUSHI Working Group

- Adam Chandler (co-chair), Cornell
- Oliver Pesch (co-chair), EBSCO
- Ivy Anderson, California Digital Library
- Patricia Brennan, Thomson Scientific
- Ted Fons, Innovative Interfaces, Inc.
- Bill Hoffman, Swets Information Services
- Tim Jewell, University of Washington
- Ted Koppel, Ex Libris

<http://www.library.cornell.edu/cts/elicensestudy/ermi2/sushi>



# SUSHI Contributing Partners

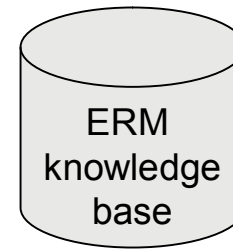
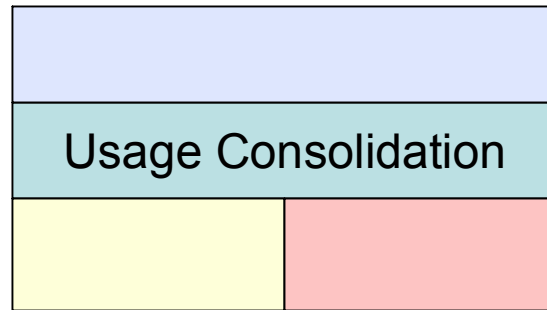
## *Founding Members:*

- *EBSCO*
- *Ex Libris*
- *Innovative Interfaces, Inc.*
- *Swets Information Services*
- *Thomson Scientific*

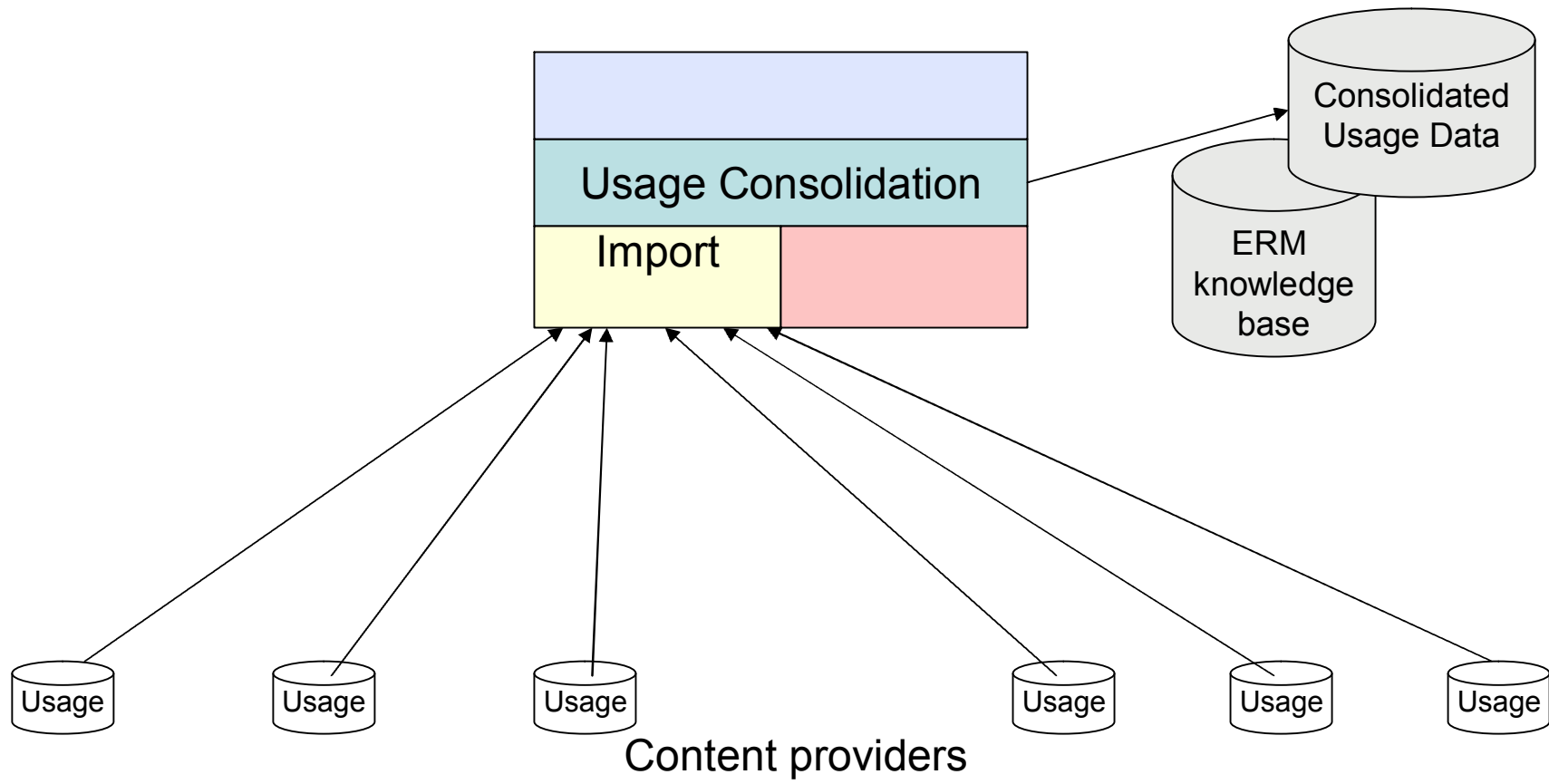
## *Newer members:*

- *Endeavor Information Systems*
- *Florida Center for Library Automation*
- *College Center for Library Automation (CCLA) from the State of Florida Community Colleges*
- *Otto Harrassowitz*
- *OCLC*
- *Project Euclid*
- *Serials Solutions*
- *SirsiDynix*

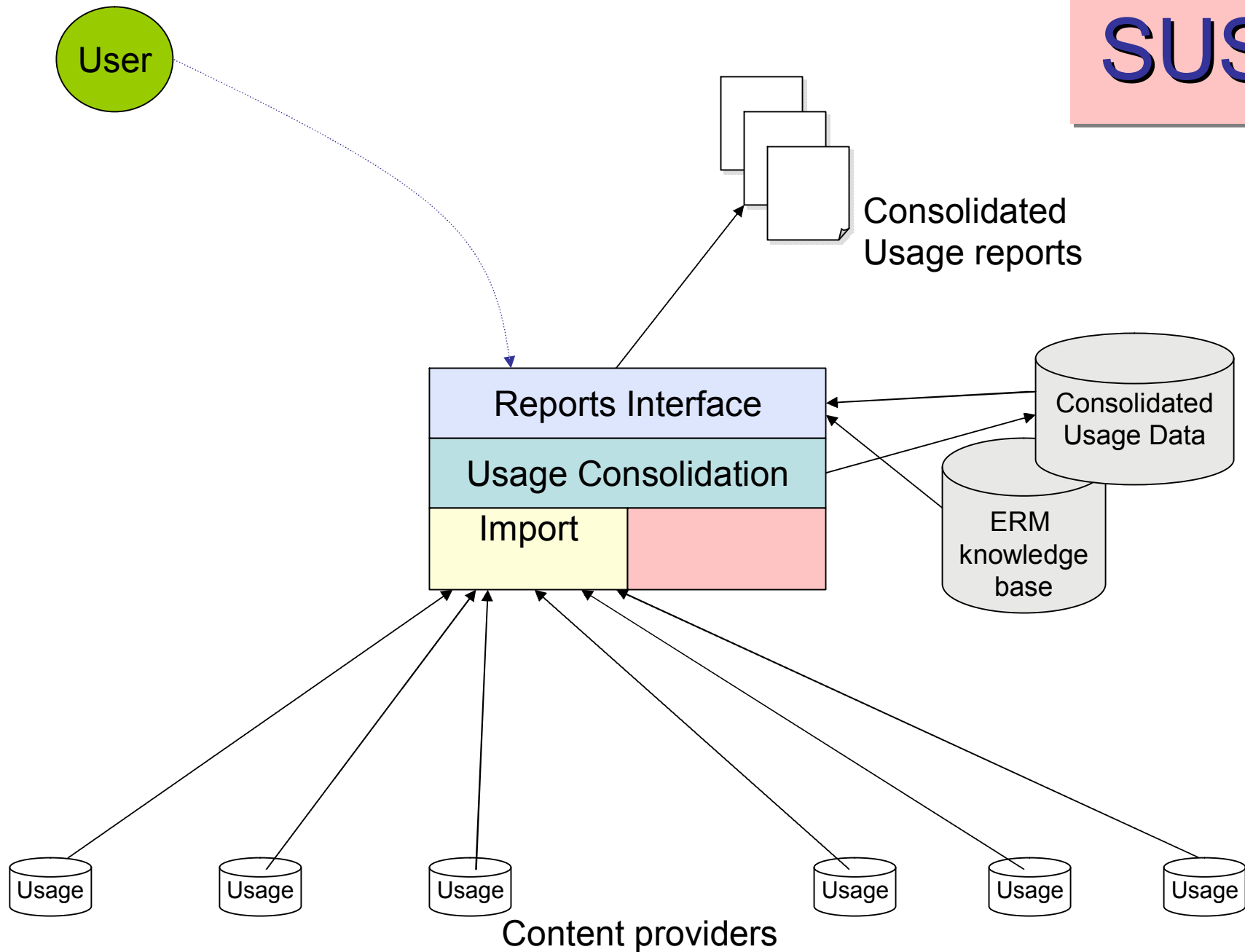
# SUSHI



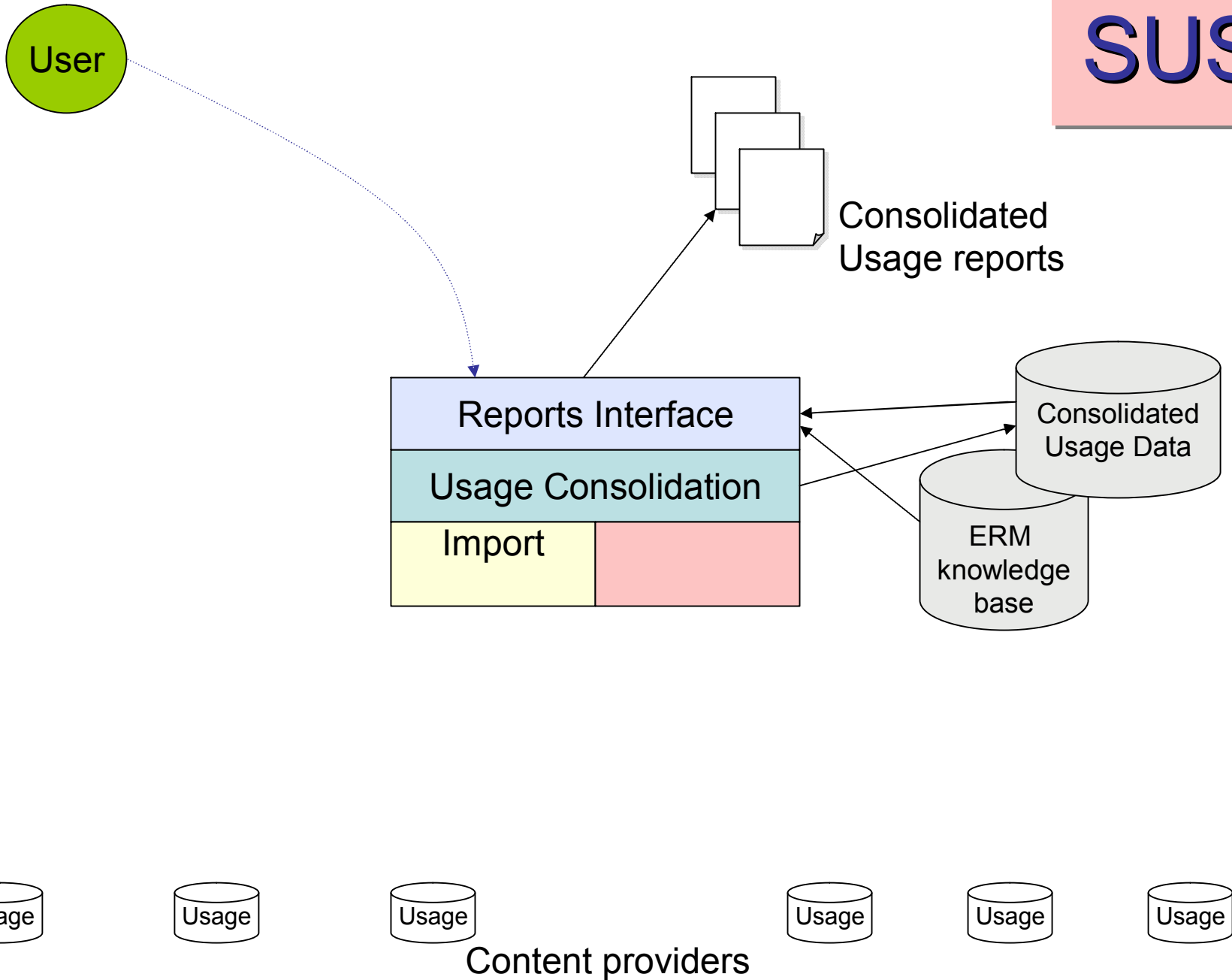
# SUSHI



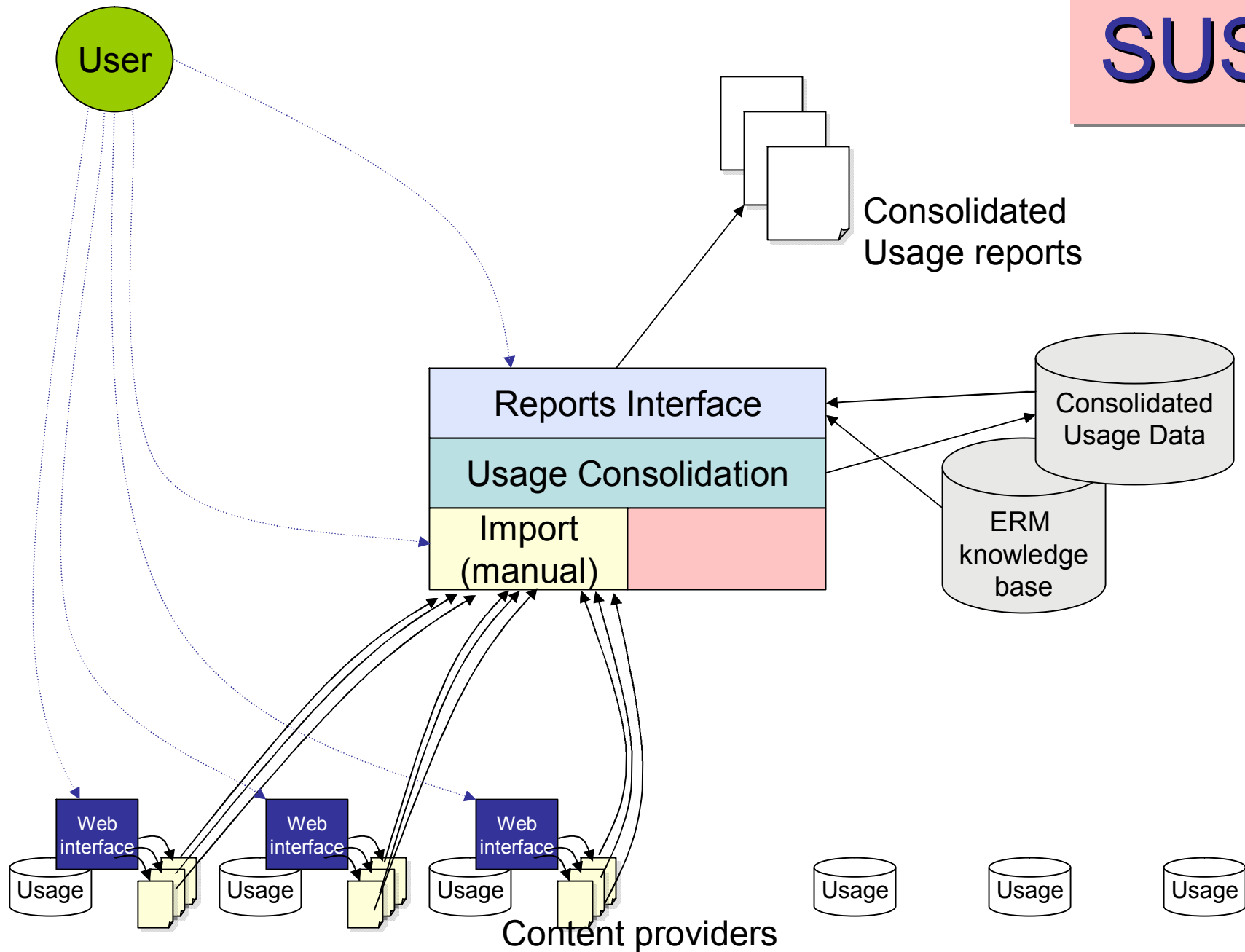
# SUSHI



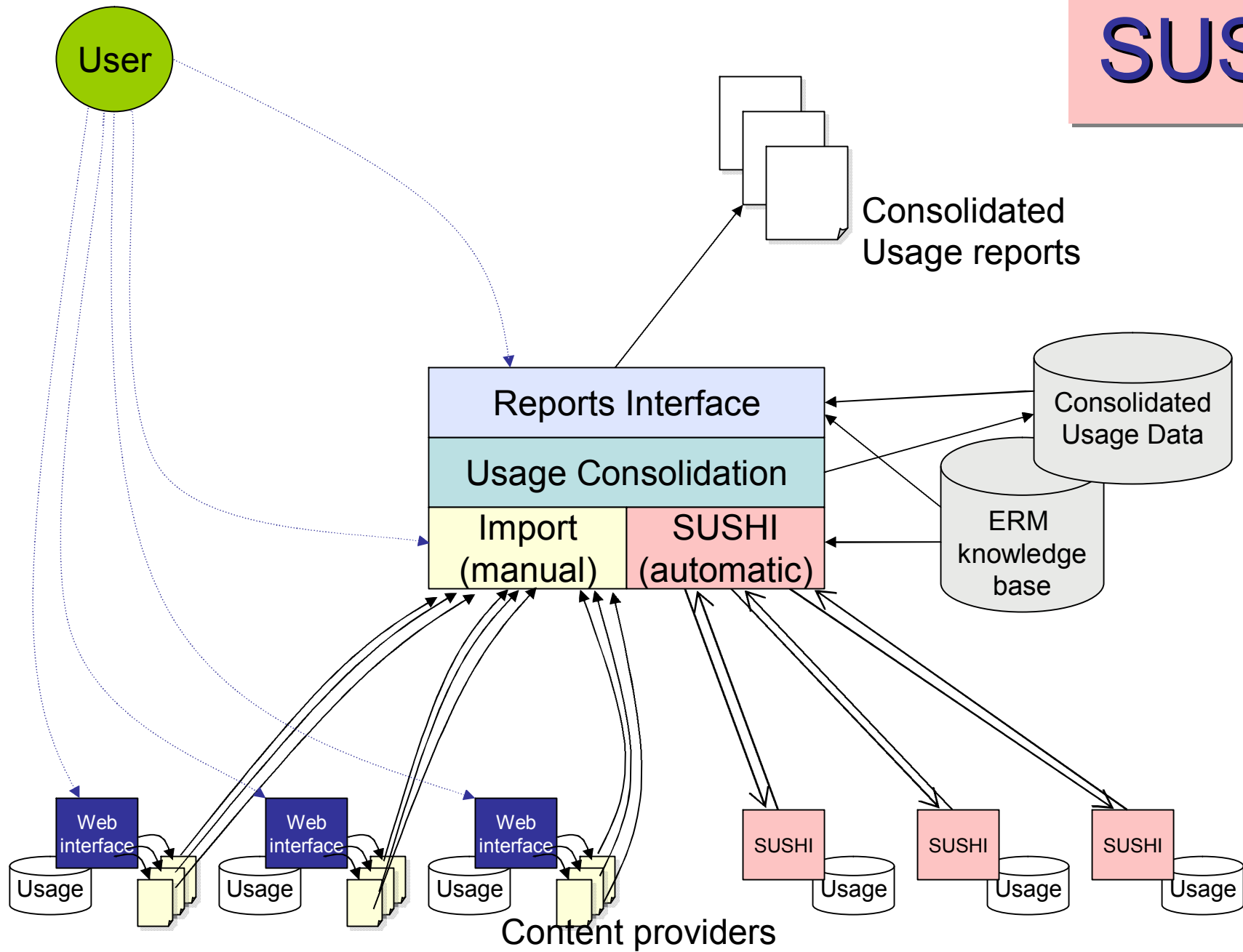
# SUSHI



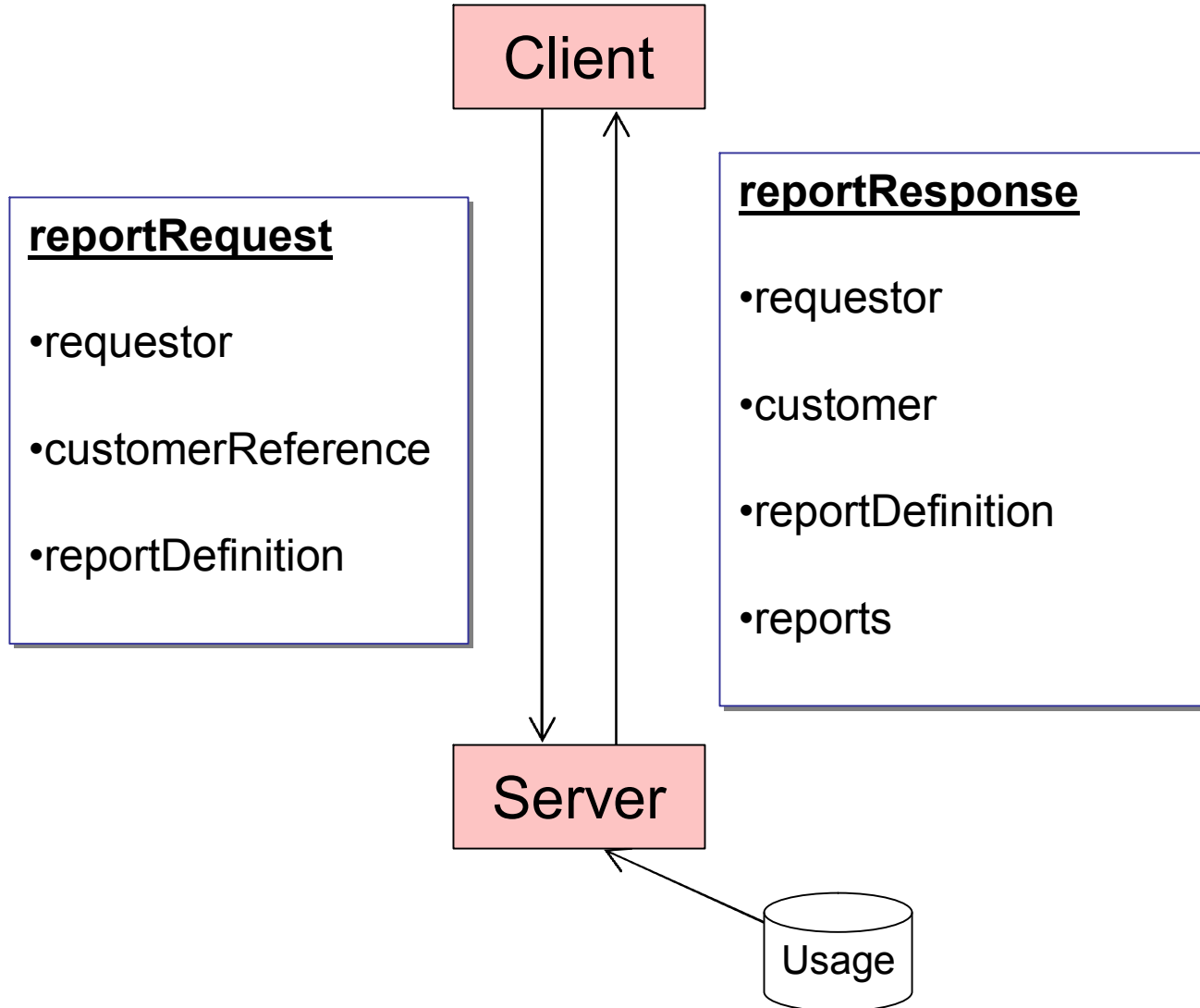
# SUSHI



# SUSHI



# SUSHI

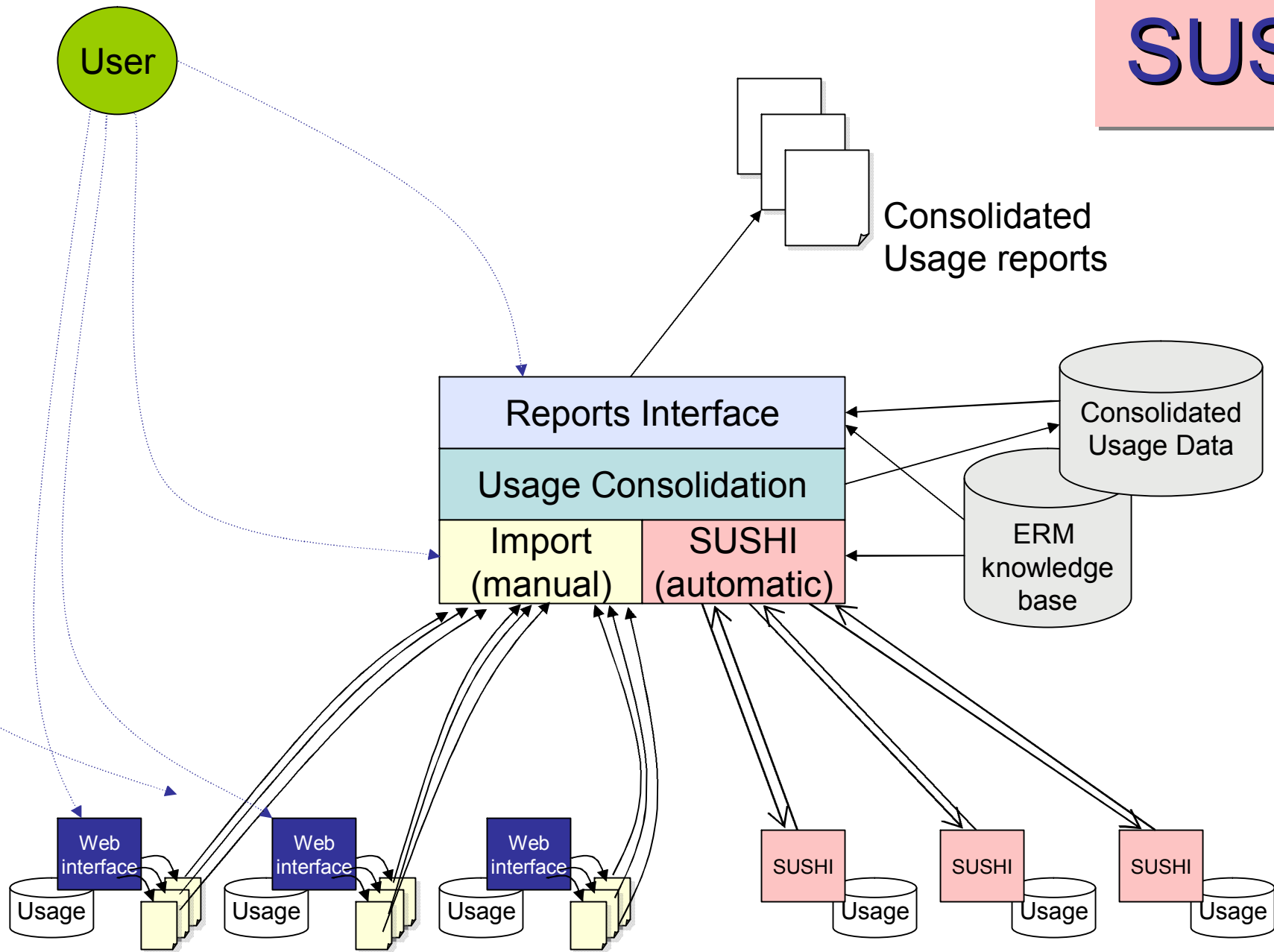




```
<reportRequest xmlns="urn:SUSHI">
  <requestor>
    <id>1234</id>
    <name>Innovative ERM</name>
    <email>Test@innovative.com</email>
  </requestor>
  <customer>
    <id>789</id>
    <name>Example University</name>
  </customer>
  <reportDefinition name="Report 1 (J1)">
    <filters>
      <usageDateRange>
        <begin>2005-01-01</begin>
        <end>2005-05-31</end>
      </usageDateRange>
    </filters>
  </reportDefinition>
</reportRequest>
```

```
<reportRequest created="dateTime" id="string"
  <requestor>
    <id>1234</id>
    <name>Innovative ERM</name>
    <email>test@innovative.com</email>
  </requestor>
  <customerReference>
    <id>789</id>
    <name>Example University</name>
  </customerReference>
  <reportDefinition name="Journal Report 1 (r2)">
    <filters>
      <usageDateRange>
        <begin>2006-01-01</begin>
        <end>2006-12-31</end>
      </usageDateRange>
    </filters>
  </reportDefinition>
</reportRequest>
```

# SUSHI



# SUSHI Project Status

- Web site available  
<http://www.library.cornell.edu/cts/elicensestudy/ermi2/sushi>
  - Toolkit, sample code, developer listserv
- Journal Report 1 Prototype done
- Security “wrapper” to be added
- Open pilot in 2-4 weeks for participants to exchange live data

# SUSHI Next Steps

- Publicize, push for adoption by data providers
- Write NISO “Draft Standard for Trial Use”
- Organize NISO-sponsored stakeholder meeting (April or May)
- Gather input, revise draft into “real standard”
- Expand scope beyond Journal Report 1 (Database Reports likely next)